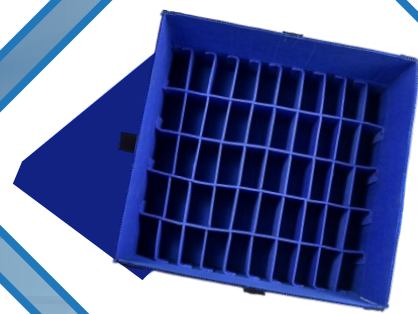
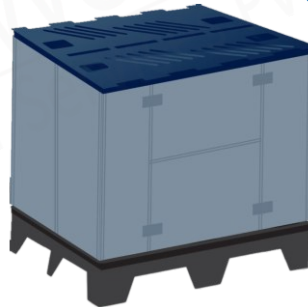




**OPTIPAC GROUP**

— Quality Encased —



### Optimal Packaging Solutions for Sustainable Future

FLC Box | PP Flute Sheet | PP Bubble Guard Sheet | PP Boxes - Universal  
PP Boxes - Overlapping | PP Inserts | PP Box with Foam | PP Separators | PP Sleeves  
PP Sleeves With Insert | Viscom Sheet

## ABOUT US

Optipac Group Private Limited stands as a prominent leader in the industrial manufacturing landscape, distinguished by its unwavering commitment to delivering innovative and high-quality packaging solutions.

Our operational philosophy is deeply rooted in the rigorous adherence to stringent international quality standards, a dedication that ensures our comprehensive range of durable and reliable products consistently meets the exacting demands of global industrial requirements. At the core of our capabilities lies a profound strength in providing meticulously engineered, customized packaging solutions, thoughtfully designed to address the diverse and often unique challenges presented by a multitude of industrial sectors.



### Our Mission

To be a catalyst for packaging innovation, delivering high-quality, customized solutions that meet the evolving needs of our industrial partners while championing sustainability and fostering lasting value.



### Our Vision

To be the preferred global leader in sustainable industrial packaging, recognized for our innovative solutions, unwavering commitment to quality, and our role in empowering businesses to thrive in a responsible and efficient future.

## • OUR VALUES •



INTEGRITY



INNOVATION



SUSTAINABILITY

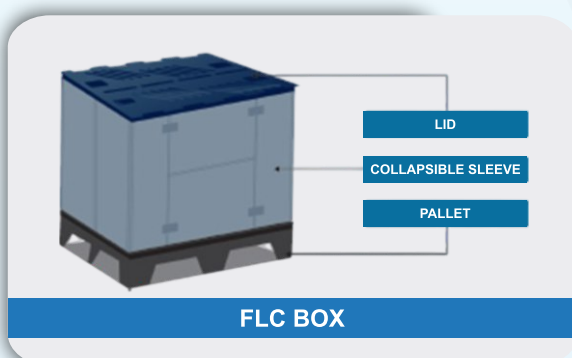


QUALITY



CUSTOMER FOCUS

## FLC BOX

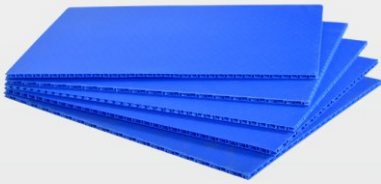


FLC box majorly includes 3 parts Lid, Pallet & Collapsible Sleeve. It may also comprises the optional components like Locks, Windows, Inserts & Partitions.

### Available Sizes

- A). 1200 X 800 X 975
- B). 1200 X 1000 X 1000

## OUR PRODUCTS



**PP BUBBLE GUARD SHEET**



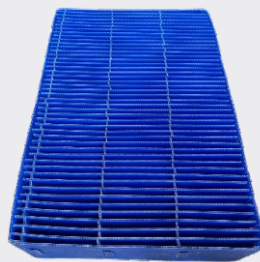
**FLC BOX**



**PP UNIVERSAL BOX**



**PP OVERLAPPING BOX**



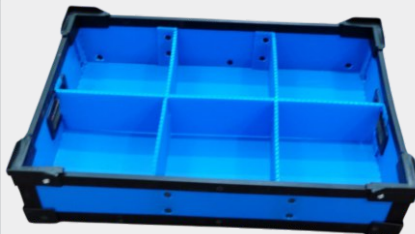
**PP INSERTS**



**PP SLEEVES**



**PP SLEEVES WITH INSERT**



**PP CRATE**



**CUSTOMISED FLC BOX**

### KEY BENEFITS

- Durability
- Recyclable
- Eco-Friendly
- Lightweight
- Customizable
- Cost-Effective
- Easy to Fabricate
- Water Resistance
- Durable & Reusable
- High Strength & Rigidity
- Chemical Resistance
- Printable & Laminable
- Versatile Applications
- Impact Resistance & Cushioning

### • Premium Quality Products

At Optipac Group Private Limited, we are committed to delivering high-quality, globally approved packaging solutions that ensure durability, precision, and customer satisfaction.

### • Customer-Centric Approach

At Optipac Group Private Limited, our customer-centric approach means deeply understanding client needs to deliver tailored solutions, fostering strong, long-term relationships built on trust and mutual success.

## WHY CHOOSE US?

- Impartial, Unbiased & Cost-Effective Solutions.
- Value Addition Over Cost.
- High-Quality Product Range Backed with Technical Assistance.
- Customer-Centric Approach with Commitment to Perform.
- Competitive Product Pricing with Unmatched Quality.
- Customer Delight Through Reliable & Fully Customized Solutions.
- Timely Material Delivery & Perfect After-Sales Services.

## Our Clients



& Many More...



**OPTIPAC GROUP**  
— Quality Encased —

## CONTACT US

☎ +919637672294 / +918446146653

✉ [ganesh@optipacgroup.com](mailto:ganesh@optipacgroup.com) 🌐 [www.optipacgroup.com](http://www.optipacgroup.com)

📍 Gat No 28, opp.to Dev Logistics, near Bhosale Transport,  
Borhadewadi, Moshi, Pimpri-Chinchwad, Pune, Maharashtra 412105



Scan to Visit Website